

The LED Obstruction Lights of the E59 family are designed for marking buildings, poles, towers, smokestacks, and other potentially hazardous obstructions to air traffic with steady red safety light. Light fixture of the lights consists of circular printed circuit boards with light emitting diodes (LED's) and necessary electronics circuitry mounted on an aluminium shaft fixed to a circular base plate, covered by a clear UV-stable impact resistant polycarbonate or glass cupola, which is compounded to the base plate. The assembly is fully sealed and has no user-serviceable parts inside.

Models of E59 Obstruction Lights

We offer several models of E59 LED Obstruction Lights to meet the customer requirements concerning light intensity and vertical viewing angles:

Model	Conformance to standards	Light radiating patterns
E591	ICAO Aerodromes Annex 14, November 1999	Low-Intensity Type A 10 cd (+6°...10°) vertical beam spread $\geq 10^\circ$
E593	ICAO Aerodromes Annex 14, November 1999	Low-Intensity Type B 33 cd (+6°...10°) vertical beam spread $\geq 10^\circ$



E59 versions

Each light model can be supplied in different configuration depending on customer preferences regarding the horizontal viewing angle, electrical power supply, type of connection box, cupola material, and mounting options. Available versions are listed in the table below.

Version ID	Horizontal viewing angle	Power supply voltage	Power consumption		Type of connection box	Cupola
			E591	E593		
FA1G1	360°	230 VAC	5...7 W	10...16 W	one - cable	glass
FA2G1	360°	230 VAC	5...7 W	10...16 W	two - cable	glass
FD1G1	360°	48 VDC	5...7 W	10...16 W	one - cable	glass
FD2G1	360°	48 VDC	5...7 W	10...16 W	two - cable	glass
FC1G1	360°	24 VDC	5...7 W	10...16 W	one - cable	glass
FC2G1	360°	24 VDC	5...7 W	10...16 W	two - cable	glass
FA1P1	360°	230 VAC	5...7 W	10...16 W	one - cable	polycarbonate
FA2P1	360°	230 VAC	5...7 W	10...16 W	two - cable	polycarbonate
FD1P1	360°	48 VDC	5...7 W	10...16 W	one - cable	polycarbonate
FD2P1	360°	48 VDC	5...7 W	10...16 W	two - cable	polycarbonate
FC1P1	360°	24 VDC	5...7 W	10...16 W	one - cable	polycarbonate
FC2P1	360°	24 VDC	5...7 W	10...16 W	two - cable	polycarbonate
HA2P1	180°	230 VAC	3...5 W	5...8 W	two - cable	polycarbonate



Department of Navigation Systems

Call +372 639 7991

Fax +372 639 7992

E-mail: ekta@ekta.ee

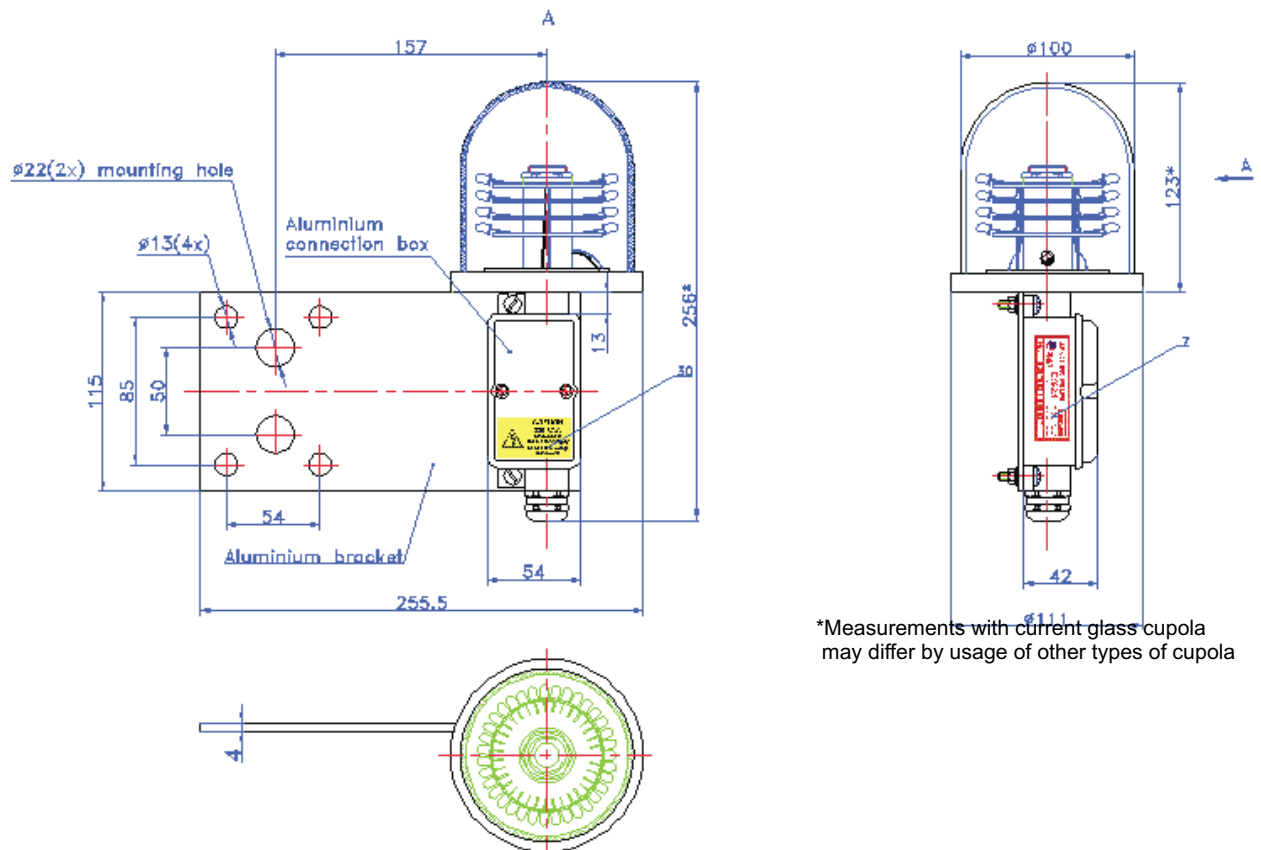
Akadeemia tee 21, 12618 Tallinn, ESTONIA

Visit our website at www.ekta.ee

Technical specifications

ENVIRONMENTAL OPERATING CONDITIONS

Ambient air temperature	from - 40 °C to + 55 °C (IEC 60068-2-1, IEC 60068-2-2, IEC 60068-2-14);
Relative humidity	up to 98 % at temperature up to +35 °C (IEC 60068-2-3);
Salt mist conditions	(IEC 60068-2-11);
Mechanical vibration	10 - 500 Hz with acceleration up to 2.2 g (IEC 60068-2-6);
Ingress Protection	class: IP68
Typical weight	1.3kg
Cable gland	PG16
Outer diameter of the cable	10 mm to 14 mm
Safety	Class 2M (IEC 60825-1:1993+A1:1997+A2:2002)



Layout and dimensions of the LED Obstruction Light E593 FA1G1 (glass cupola, connection box with one cable port).

If you need more information, including the information on prices and availability of our products, please do not hesitate to contact our marketing group.

Note: We have a distributor in place of Nordic markets. We are pleased to send you contact information if you need our Luftfartsvärket-approved LED Obstruction Light E592.1 for application in the Nordic countries.

CAUTION: LED light units are sources of bright light, do not stare directly into the beam from close distances and observe all the warnings and guidelines in the Instruction Manual. ekta™ E59X LED Obstruction Lights are classified as Class 2M LED devices according to the standard IEC 60825-1:1993+A1:1997+A2:2001.

