

Our engineering team has developed LED optical units for replacing the conventional incandescent lamps in traffic signal heads to help the proper authorities to achieve improved road traffic safety and reduced long-term maintenance costs.

While the power requirement of our LED modules enables five times lower power consumption at the similar optical output compared to traditional incandescent lamps, the maintenance costs will be further reduced due to the extended lifetime of the system.

### *Features*

**No "Phantom" effect** (colored reflections from the intensive sunlight) - LED units are colorless by itself and provide red, yellow, and green light beams for road traffic control only when the power is applied to a unit.

**Compactness** - each unit's circuitry is fully integrated into a transparent plastic enclosure with a circular rear plate. The enclosure itself serves as a front lens.

**Retrofitting** - the units are designed for mounting into standard signal heads, being suited for long term operation in field conditions.



**Full signal heads** - we also offer standard 3-color road traffic light with 200 mm LED modules in rugged plastic enclosure.



**Images of different shape** - we also offer 100 mm modules with the image of user defined shape (e.g. E524 →)



**Department of Navigation Systems EKTA**

Call +372 639 7991

Fax +372 639 7992

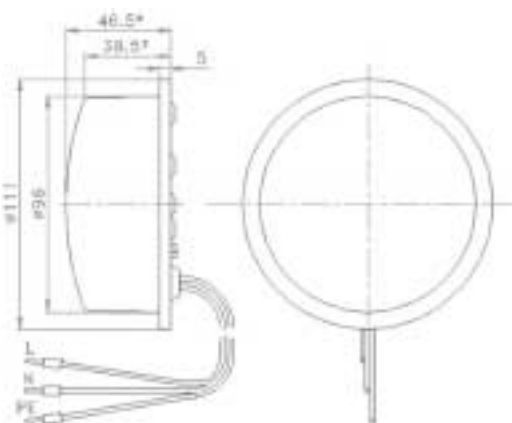
E-mail: [ekta@ekta.ee](mailto:ekta@ekta.ee)

Akadeemia tee 21, 12618 Tallinn, ESTONIA

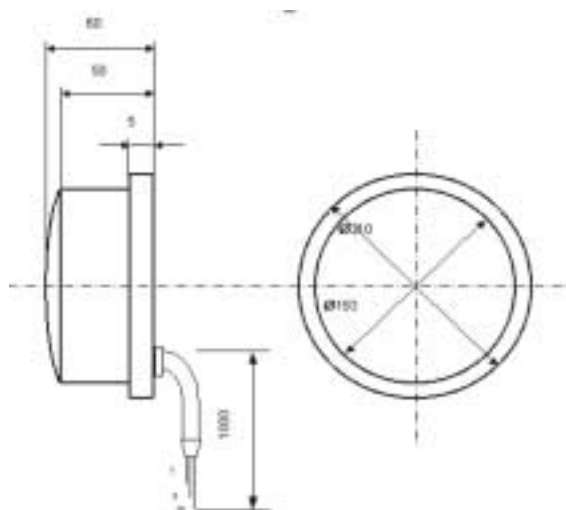
Visit our website at [www.ekta.ee](http://www.ekta.ee)

### Technical specifications

Type	E510	E520
Diameter	100 mm	200 mm
Height	47 mm	62 mm
Luminous intensity	>100 cd	>200 cd
Operating voltage	230 VAC	230 VAC
Average power consumption per light aspect	7 W	12 W
Temperature range	from -30°C to +60°C	
Warranty period	5 years	
Conformity	EN 12368	



Layout and dimensions of the LED Optical Unit E510



Layout and dimensions of the LED Optical Unit E520